

Input Voltage	Pod Power	Max Pod Quantity per Output Channel	Horn
12V DC	6w	10pc	1.5A 105db

Warranty and Disclaimer

Within THREE years after the purchase date, the original buyer may return any XKchrome controller that has failed due to a defect in materials or workmanship. XKchrome Light Bars that have one or more LEDs fail to illuminate due to a defect in materials or workmanship are covered with a THREE year warranty for **the original buyer**.

Installation of this product must be performed by a licensed professional. Should the failure of the product be the result of damage occurring as a result of improper installation, alteration of the product or an act or omission on the part of the consumer, this warranty is void. XKGLOW Lighting shall not be responsible for any consequential damages which arise from the use and/or installation of the product. If the kit is installed in any manner other than specified, XKGLOW Lighting reserves the right to deny any warranty claims at the discretion of the technical support department. Any product return must include the original packaging, invoice number and a statement of the alleged defect. Upon receipt of the returned product, the company will test the product for defect. If the results of the testing do not support the warranty claim, do not reveal any defect or indicate consumer negligence in the installation and handling of the product, then the product will be returned to you and you will be charged a reshipping fee. If the product is returned from an address within the continental United States, within the first 30 days after purchase, and is found to be defective, XKGLOW Lighting will exchange or refund the original purchase expense. This offer does not extend to the cost for shipping charges on any international packages.

Additional Disclaimer Terms

Please check your local and state laws for the proper use of this product.

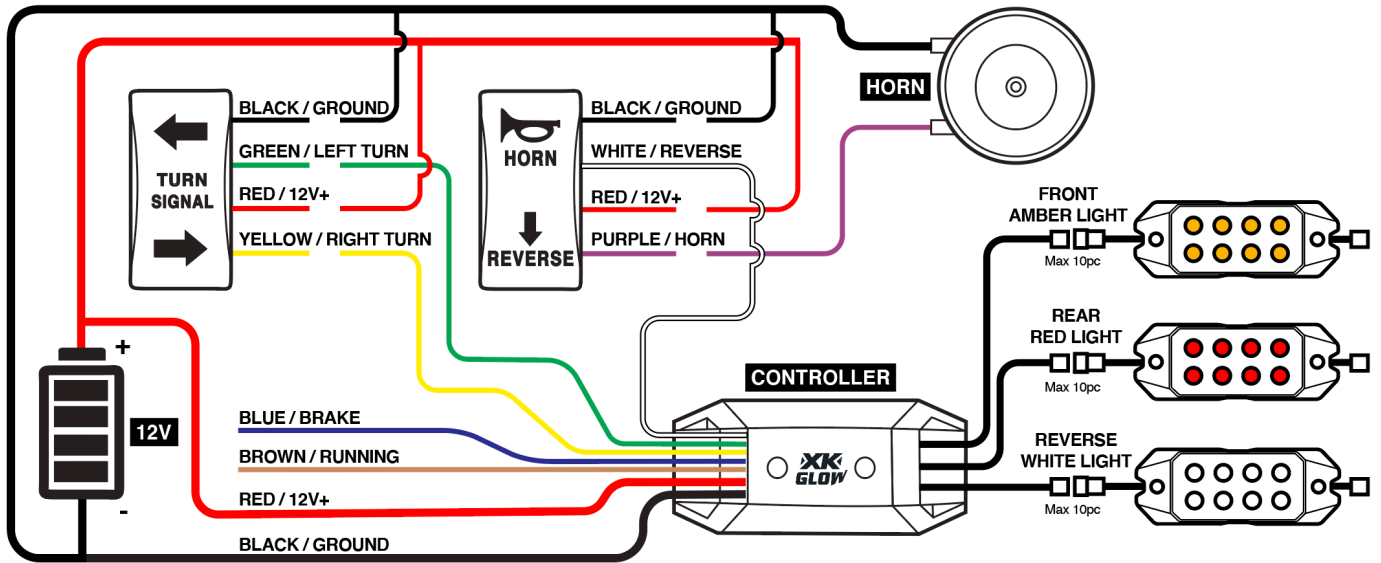
- Improper installation of electrical products such as lighting may cause damage to any vehicle or device to which the improperly handled or installed lighting is attached.
- Improperly installed product may cause electrical injury to persons.
- It is recommended that the kit should be installed by a licensed professional.
- XKGLOW assumes no liability for the installation of the product.
- Warranty or liability will not exceed the product purchase price, which shall be buyer's sole and exclusive remedy.

Return/Exchange Procedure

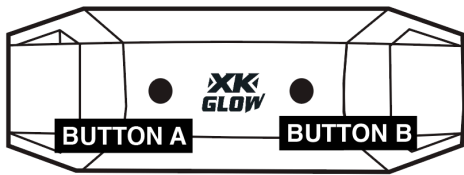
1. Email [xk@xkglow.com] to notify us of the product issue as well as the item number and name of customer on invoice.
2. We will send you the trouble-shooting guide to fix the issue, or to narrow down which of the component(s) need to be replaced. If the issue still exists, we will ask you to send back the defective items to be replaced.
3. Please send the returned item as instructed, along with claims and a telephone number where you can be reached.
4. After the returned item(s) have been accepted and inspected, we will issue a refund or replace the items ASAP. For refunds, item(s) must be sent to XKGLOW within 14 days from date of purchase. Original shipping charges are not refundable.

We always stand behind our products and are committed to our customers! For questions you may have, please contact xk@xkglow.com. We normally respond within 24 hours. (Monday-Friday).

Pre-install Testing & Configuration



1. Follow the above diagram to connect all wirings on a test bench. Pay attention to the labels attached to the wires.
 - a. Wires that should be connected are designed to be color-matched.
 - b. In this step, wires only need to be temporarily connected for testing/configuration purposes. No extension wire is needed in this step.
 - c. On the output end of the controller, FRONT is for amber lights. REAR is for red. REVERSE is for white.
2. **If you have more than 2 lights connected to FRONT or REAR channel, you need to configure the quantity of connected amber and red lights into the controller.**

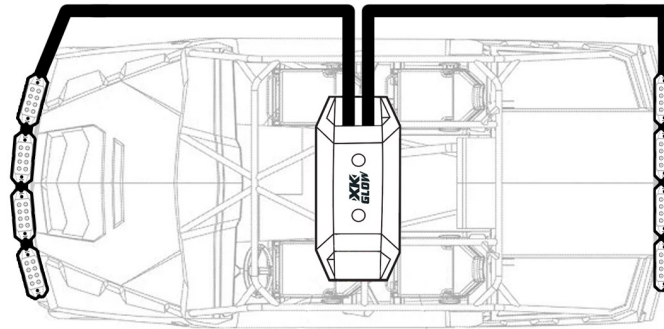


- a. **Configuring FRONT amber light channel:** Hold A button (left of the logo) for 2 seconds until 2 amber lights come on. Short press A button to light up 2 more lights each time. Stop when all connected amber pods come on. Short press B (right of the logo) to exit.
 - b. **Configuring REAR red channel:** Hold B button for 2 seconds until 2 red lights come on. Short press B button to light up 2 more lights each time. Stop when all connected red pods come on. Short press A to exit.
 - c. Press both turn signal buttons to see if exactly half of the amber and red lights are blinking properly. If not, you might have over set the numbers of the connected lights. Repeat step #a or #b on the respective channel.
 - d. Reverse white light channel does not need to be configured.
3. Press turn signals, reverse light and horn buttons to verify all functions.
 4. Disconnect all parts after verifying all functions are working properly and get ready for mounting on the vehicle.

Pod Orientation

The DOT system features sequential turn signal function. In order for these functions to work properly, the pods must be wired in the correct orientation. Each output zone from the Controller must begin on the passenger side of the vehicle. If not, the turn signals will be opposite of what is reflected on the Switch Panel buttons. See diagram below.

DAISY CHAIN MUST BEGIN ON PASSENGER SIDE



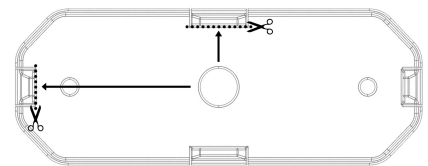
Mounting Instructions

1. **Install Pods:** Choose proper wiring and mounting method from the two below options.

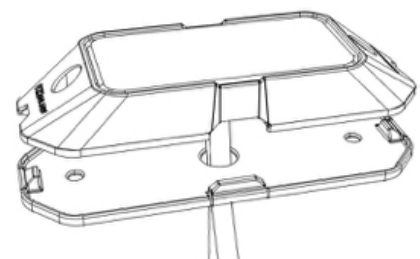
Option A. Surface Mount Wiring: The pod was designed to allow for easy surface mounting. Simply cut off two of the tabs on the rubber grommet to make room for the wiring to enter/exit and ensure the wiring follows the channels on the back of the pod when mounting. Failure to follow the wiring channels may result in pinched/broken wiring when screwing the pod into place. Options below.



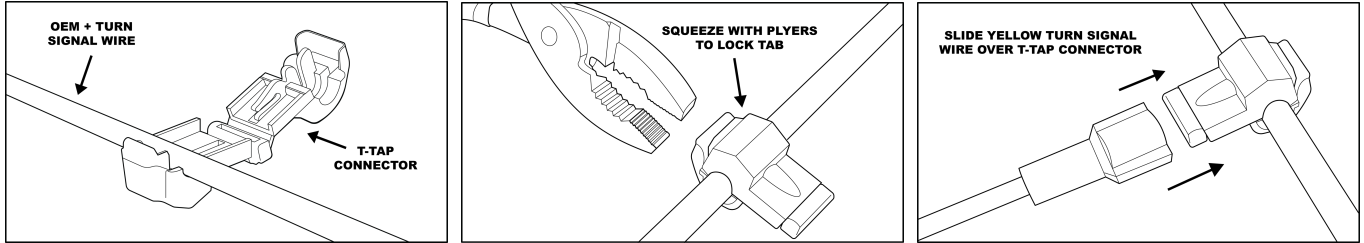
Select two of the four tabs on the rubber grommet for the wiring to feed through. These will be for the input and output wires. Choose what best fits selected pod in its desired mounting location and using a pair of scissors or a razor blade, carefully cut off the two tabs. Leave the remaining two tabs in place to prevent dirt/grime buildup under the pod.



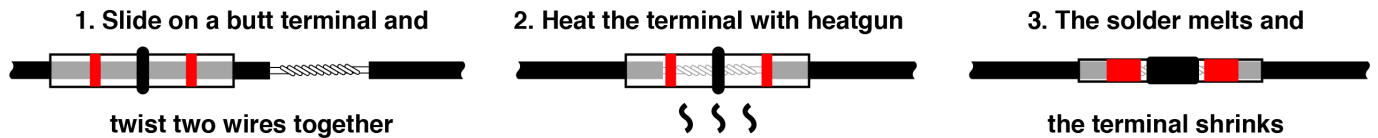
Option B. Through Hole Wiring: If you can access the rear of the panel you are mounting to, you can utilize the through-hole wiring method. Simply drill a 3/4" hole in your desired mounting location and feed the wiring through to the rear of the panel. This method can be seen to the right.



- 2. Tap into the running and brake light wires:** Please check service manual specific to your make and model to verify positive running wires. Use the included T-tap connector to tap the blue wire from the controller onto the brake light positive wire. This will turn the lights red automatically when the brake is on. Tap the brown wire into the running light positive wire.



- 3. Install Horn, Controller and Switch Panel:** Mount the horn, controller and switch panels onto proper locations and securely connect them based on the diagram on the last page. Following the below steps and use the included Solderless & Crimp-less Heat Shrink Butt Terminal to connect extension wires if needed.



- 4. Connect all power and ground wires to vehicle battery last. Test and verify all functions work properly.**

Control Functions

- 1. Hazard Mode:** Quickly turn on & off either turn signal twice within 0.5s. Press any turn signal button again to exit.
- 2. Horn, turn signal, brake, and reverse functions:** Controlled by switch panel.
- 3. Running and brake light functions:** Automatically triggered by sensor wires.
- The turn signal pattern automatically upgrades to sequential chasing style when there are more than 6 lights connected to each of the red and amber channels.
- Max capacity of each channel is 10 pods.

Switch Pinout

